



2016 Cancer Program Annual Report

(Contains 2015 Data)

CHAIRMAN'S REPORT



The Delbert Day Cancer Institute (DDCI) and Cancer Program at Phelps County Regional Medical Center (PCPMC) has continued with significant change and amazing

growth over the past year. The DDCI has continued to expand its ability to bring high-quality cancer care to our community. Community members are supported with services that include education, prevention, screening, navigation, diagnosis, genetic counseling, treatment, supportive care, oncology rehab and survivorship plans. Most of these services are personalized for the lives and diagnoses of the patients and community members for which they help. Patients also have access to national clinical trials here at PCPMC through our affiliation with Cancer Research for the Ozarks. We are able to offer patients the option to participate in research trials, which give us the ability to provide the highest standard of care and help shape the future of cancer treatment globally.

All providers and support staff involved in cancer care at the DDCI continue to meet each week to discuss patients and cancer cases. Through this multidisciplinary team, a treatment plan is designed for each patient that ensures great communication between teams and allows us to deliver the highest quality of multidisciplinary care. These meetings include radiologists, medical and radiation oncologists, general surgeons, pathologists, urologists, pulmonologists, palliative and supportive care physicians, gynecologists, otolaryngologists as well as nursing staff, social workers, dietitians and many others.

Of course, our biggest news is the progress of our integrated and multidisciplinary DDCI building slated to open in January 2017. A new state-of-the-art Varian TrueBeam linear accelerator (the machine which generates radiation), new Siemens PET/CT scanner and X-ray units have been installed. In January, these machines will allow us to complete better screening, diagnoses and radiation treatments that have never been offered in our

community. A new state-of-the-art pharmacy and infusion area will improve our ability to deliver chemotherapy to our patients and create an excellent environment for patients receiving infusions. The new center will bring together the oncology disciplines to deliver true, integrated, multidisciplinary care. It will have a state-of-the-art conference center, as well as a community resource room to improve education, communication, research and community outreach. We are very excited for the opening of the new building as it will be a great symbol for the amazing care we deliver and allow us to continue to expand and improve the services available here at the DDCI and PCPMC for the community.

-Christopher Spencer, MD

Six major sites for 2015 analytic cases:

Anatomical Site	Number of Cases
Breast	78
Lung	58
Colorectal	35
Thyroid	15
Bladder	13
Prostate	13

NOTES:

[illegible]

Sat

7

New Year's Day

14

21

Martin Luther
King Jr. Day

28

31



**PHELPS COUNTY REGIONAL
MEDICAL CENTER**
Delbert Day Cancer Institute

January 2017

Phelps County Regional Medical Center (PCPMC) is voluntarily accredited and monitored through the American College of Surgeons Commission on Cancer (ACoS-CoC) (<https://www.facs.org/quality-programs/cancer/coc>), an organization that establishes standards to ensure that our patients and their families have access to the full scope of services required for diagnosis, treatment, rehabilitation, and support. CoC-accredited cancer programs are dedicated to providing the best in patient-centered care.

2015 Cancer Conference Prospective Presentation

Anatomical Site	Number of Cases
Breast	48
Head & Neck	19
Lung	18
Colorectal	14
Lymphoma	13
Melanoma	9
Esophagus	7
Prostate	6
Multiple Myeloma	5
Unknown	4
Gynecologic	3
Sarcoma	3
Thyroid	3
Other	17

Multidisciplinary Cancer Conferences (Tumor Board)

A multidisciplinary team of physicians and other healthcare professionals attend these conferences. They include discussions of patient medical history, diagnostic testing, surgical procedures, state of disease at diagnosis and prognostic indicators, treatment options including palliative care, pain management, national treatment guidelines, genetic counseling, psychosocial distress, clinical trials and survival outcomes. The latest in diagnostic technology and research protocols are discussed.



NOTES:

Sat

1

2

3

4

Groundhog Day

5

6

7

8

9

10

11

12

13

14

15

16

17

18

Lincoln's Birthday

Valentine's Day

19

20

21

22

23

24

25

President's Day

26

27

28



**PHELPS COUNTY REGIONAL
MEDICAL CENTER**
Delbert Day Cancer Institute

February 2017

THE CANCER REGISTRY

- The Cancer Registry provides data management services to meet mandatory state reporting regulations and data needs of clinicians, administrators and other users.
- In 2015, there were 370 new cancer cases entered into the cancer registry.
- 348 of the 370 cases entered were newly diagnosed and/or treated at PCRMC (analytic cases); the other cases were new to PCRMC and treated for a recurrence or progression of their disease (non-analytic cases).
- The Cancer Registry collects, manages and analyzes data on cancer patients, maintaining lifetime follow-up for all analytic cases in compliance with the standards of the American College of Surgeons Commission on Cancer.
- Statistics can be retrieved from the Cancer Registry upon request to be used to study treatment outcomes, evaluate patient care and assist in administrative planning and cancer research.
- Data is reported annually to, and used for comparison with, the Missouri State Cancer Registry (MCR) and the National Cancer Database (NCDB) for cancer case incidence and cancer survival data.



Sarah Wiggins, BA, CTR
Certified Tumor Registrar



Andrea Litz, BGS
Registry Trainee



Missouri State
Tumor Registrars
Association



Both of the PCRMC cancer registry professionals are members of the Missouri State Tumor Registrars Association (MoSTRA) (<http://mostra-ctr.org/>). MoSTRA's purpose is to disseminate information to its members regarding current activities, to promote and offer continuing education to expand the knowledge and performance of tumor registrars and to seek liaison with professional and governmental organizations which utilize data derived from cancer registries.

Both of the PCRMC cancer registry professionals are members of the National Cancer Registrars Association (NCRA) Registry (<http://www.ncra-usa.org>), an organization whose members have been recognized and certified as having superior knowledge in their field. The NCRA advocates for survivors by improving patient health outcomes through the collection of data that informs cancer research, treatment and prevention programs.

NOTES:

[illegible]

Sat

1

2

3

4

5

6

7

8

9

10

11

12

13

14

15

16

17

18

St. Patrick's Day

19

20

21

22

23

24

25

26

27

28

29

30

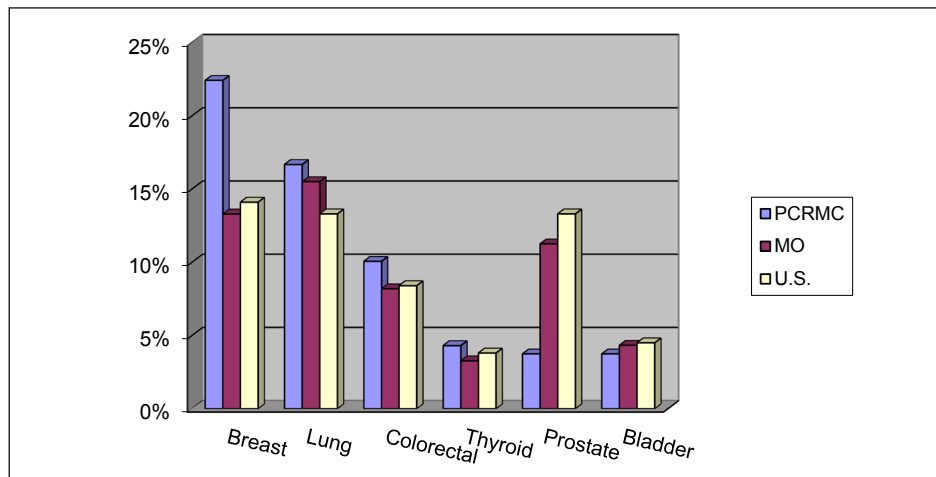
31



**PHELPS COUNTY REGIONAL
MEDICAL CENTER**
Delbert Day Cancer Institute

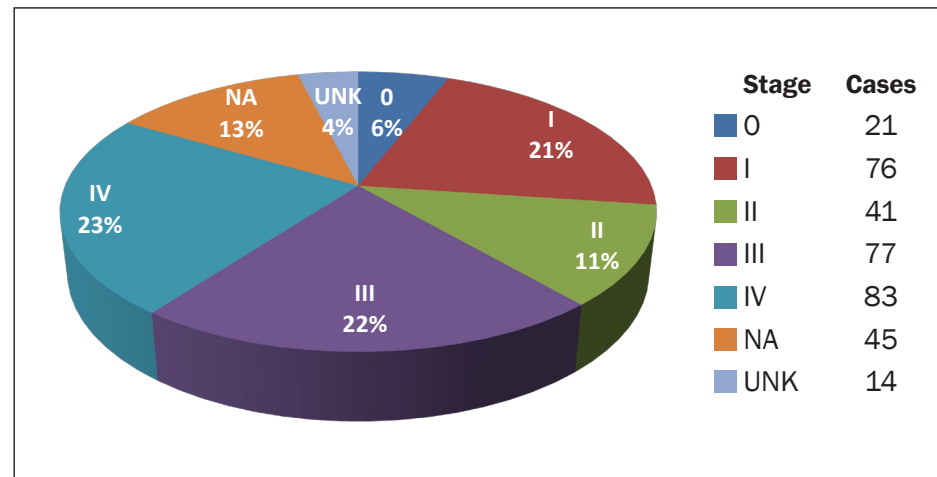
March 2017

2015 Top 5 Sites Distribution



Sources: PCRMC Cancer Registry, and ACS Cancer Facts & Figures 2015 and ACS Cancer Statistics Center

2015 PCRMC Cases by AJCC Stage

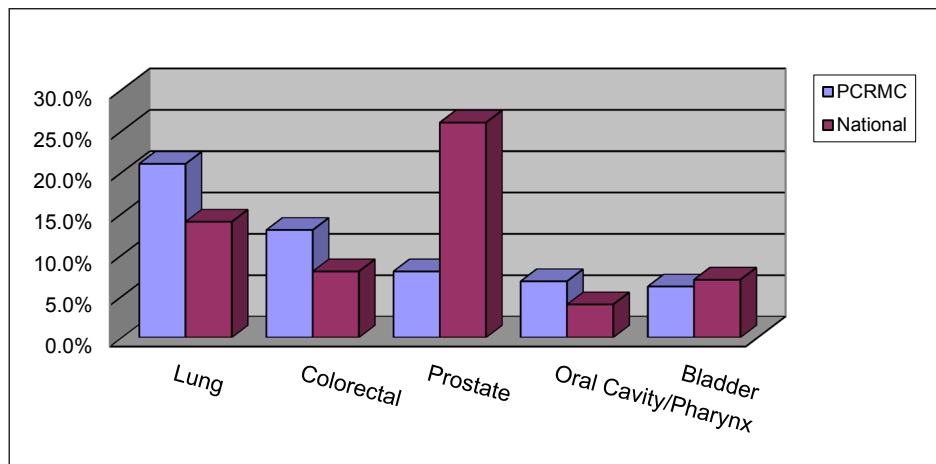


Source: PCRMC Cancer Registry

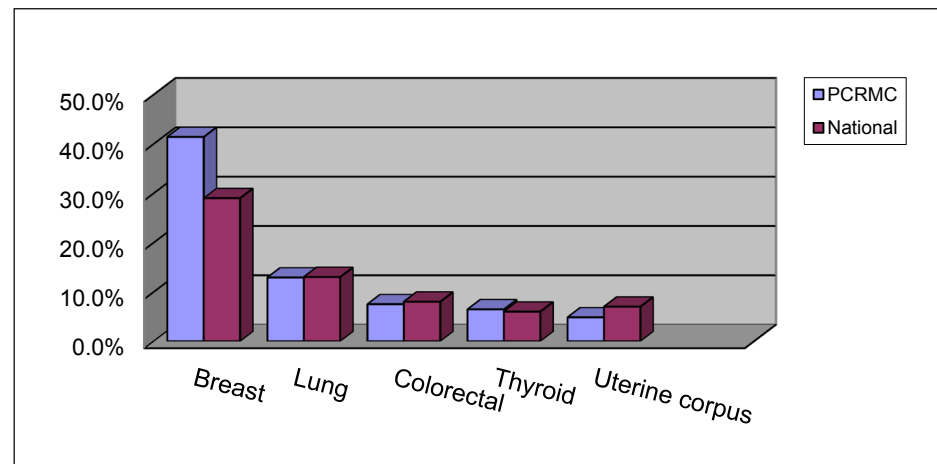
Comparison Cancer Cases in 2015 by Leading Sites and Gender

Phelps County Regional Medical Center (Analytic Cases Only)

Males



Females



Sources: PCRMC Cancer Registry and ACS Cancer Facts & Figures 2015

NOTES:

Sat

1

April Fool's Day

2

3

4

5

6

7

8

9

10

11

12

13

14

15

16

17

18

19

20

21

22

Easter Day

Tax Day

23

24

25

26

27

28

29

30



**PHELPS COUNTY REGIONAL
MEDICAL CENTER**
Delbert Day Cancer Institute

April 2017



Stephen Toothaker, MD
Medical Oncology /
Hematology

10/11/16

Author: Dr. Stephen Toothaker

Report of COC Standard 4.6

Monitoring Compliance with Evidence-Based Guidelines

Stages I through III Colon Cancer, PCRMC, 2015 Cancer Registry Data

Early stage colon cancer is a common malignancy that is highly curable with the application of evidence-based medicine. Our goal with this study was to ensure that our treatment of these patients is consistent with national guidelines to optimize outcomes. Our source for assessment was all PCRMC registered Stage I-IIIc colon cancer patients diagnosed and at least partially treated at our institution. Our assessment included evaluation of both the neoadjuvant workup and adjuvant therapy received. We chose this patient group as it is a disease state we had not recently assessed and changes in guideline-based management have recently occurred.

Colon NCCN Guidelines:

2015 Colon Cancer Cases with at least partial treatment at our facility.													
AGE	STG	SCOPE	CEA	CBC	CHEM	CTs	PATH	MMR/MSI	SURG	CHEMO	XRT	COLON CA	NCCN
67	I	YES	NO	YES	YES	NO	YES	NO	R HEMICOLECTOMY	NONE	NONE	NO FHX	YES
88	I	YES	POS	YES	YES	YES	YES	N/A	R HEMICOLECTOMY	NONE	NONE	NO FHX	YES
85	I	YES	UNK	YES	YES	YES	YES	N/A	R HEMICOLECTOMY	NONE	NONE	NO FHX	YES
68	I	YES	POS	YES	YES	YES	YES	NO	R HEMICOLECTOMY	NONE	NONE	NO FHX	YES
61	IIA	YES	NO	YES	YES	UNK	YES	MSI	R HEMICOLECTOMY	OBSERVATION	NONE	NO FHX	YES
62	IIA	NO	YES	YES	YES	YES	YES	NO	SIGMOIDECTOMY	FOLFOX	NONE	NO FHX	YES
54	IIA	YES	YES	YES	YES	YES	YES	MMR	SIGMOIDECTOMY	NONE	NONE	NO FHX	YES
83	IIIA	YES	NO	YES	YES	YES	YES	MMR	R HEMICOLECTOMY	CONTRAINDICATED	NONE	NO FHX	YES
61	IIIB	YES	YES	YES	YES	YES	YES	NO	R HEMICOLECTOMY	FOLFOX/FOLFIRI	NONE	YES	YES
70	IIIB	YES	YES	YES	YES	YES	YES	MMR	R HEMICOLECTOMY	FOLFOX	NONE	NO FHX	YES
64	IIIB	YES	YES	YES	YES	YES	YES	OUTSIDE SURG	SIGMOIDECTOMY	FOLFOX	NONE	NO FHX	YES
77	IIIB	YES	YES	YES	YES	YES	YES	N/A	L HEMICOLECTOMY	OXALIPLATIN	NONE	NO FHX	YES
77	IIIB	YES	YES	YES	YES	YES	YES	N/A	L HEMICOLECTOMY	FOLFOX/AVASTIN	NONE	NO FHX	YES
40	IIIB	YES	YES	YES	YES	YES	YES	YES	SPLENIC FLEX RESECT	FOLFOX	NONE	NO FHX	YES
64	IIIB	YES	YES	YES	YES	YES	YES	NO	SIGMOIDECTOMY	FOLFOX	NONE	UNK FHX	YES
52	IIIC	NO	NO	YES	YES	YES	NO	RECOMM, UNK	R HEMICOLECTOMY	UNK-LOST TO FU	NONE	NO FHX	UNK
55	IIIC	YES	YES	YES	YES	YES	YES	OUTSIDE SURG	L HEMICOLECTOMY	OXALIPLATIN	NONE	YES	YES

NOTES:

[illegible]

Sat

1

2

3

4

5

6

Cinco De Mayo

7

8

9

10

11

12

13

14

15

16

17

18

19

20

Mother's Day

21

22

23

24

25

26

27

28

29

30

31

Memorial Day



**PHELPS COUNTY REGIONAL
MEDICAL CENTER**
Delbert Day Cancer Institute

May 2017

Recommendations:

1) I would recommend formal documentation of all “high risk factors” for all stage IIA patients to permit easy analysis behind the rationale for adjuvant therapy recommendations for this patient population. This will also allow for affirmation of guideline conformity.

2) Make MSI/MMR testing standard of care for all patients younger than age 70 with stage II disease as is consistent with the NCCN guidelines. This has been previously discussed and will be reviewed at the next cancer committee meeting in collaboration with pathology.

3) Review appropriate adjuvant systemic therapy options as consistent with the NCCN guidelines, with particular attention to the recommended treatments.

4) I would recommend more careful attention to obtaining a CEA level as part of the assessment for colorectal cancer patients as recommended by the NCCN guidelines. This will be reviewed as well at our next cancer committee meeting.

10/11/16

Author: Dr. Stephen Toothaker

Report of COC Standard 4.6

Monitoring Compliance with Evidence-Based Guidelines Stages I through III Colon Cancer, PCRM, 2015 Cancer Registry Data

(CONTINUED)

Findings:

Patient data was reviewed and evaluated for the following criteria: colonoscopy assessment, pathology review, CT imaging, CEA assessment, CBC assessment, chemistry assessment, MSI/MMR assessment and adjuvant therapy received. A total of 17 patients were included in the assessment; 4 stage I patients, 3 stage IIA patients, 1 stage IIIA patient, 7 stage IIIB patients and 2 stage IIIC patients.

Regarding neoadjuvant assessment, 16/17 patients had a pathology review performed. 15/17 patients had colonoscopy performed. All patients had a CBC and chemistry performed. 12/17 had a CEA performed. 15/17 patients had a CT assessment performed. 5/17 patients had MSI/MMR testing performed.

Assessment of adjuvant therapy revealed that 0/4 stage I patients received adjuvant chemotherapy. 1/3 stage IIA patients received adjuvant chemotherapy. 8/10 stage III patients received adjuvant chemotherapy. Of the two patients with Stage III disease that did not receive adjuvant chemotherapy, one was lost to follow-up and for the other it was “contraindicated.”

NOTES:

[illegible]

Sat

1

2

3

4

5

6

7

8

9

10

11

12

13

14

15

16

17

Flag Day

18

19

20

21

22

23

24

Father's Day

25

26

27

28

29

30



**PHELPS COUNTY REGIONAL
MEDICAL CENTER**
Delbert Day Cancer Institute

June 2017

CANCER PREVENTION & SUPPORT

LOOK GOOD FEEL BETTER

This program is dedicated to improving the quality of life and self-esteem of people undergoing cancer treatment. It offers complimentary sessions that teach beauty techniques to help people with cancer to face their diagnosis with greater confidence. It is made possible through a collaboration of the Personal Care Products Council Foundation, the American Cancer Society and the Professional Beauty Association. Local cosmetologists volunteer to help make this wonderful program possible in our area.

COMMUNITY HEALTH EVENTS

PCPMC participated in the Dent County Million Hearts Health Fair with over 250 attendees. Information was available for healthy lifestyle changes, educational information regarding women's health, including prevention and early detection, and cancer prevention. 435 attended the Health and Wellness Expo held at Missouri S&T. Information and screenings were offered.

PHELPS HEALTH WELLNESS PROGRAM

PCPMC provides the resources to help employees and spouses to live better and healthier. The program is a voluntary wellness program for all benefits-eligible employees and spouses. Participants in the program will earn reduced payroll deductions by taking a few simple steps to better understand their health, including scheduling an annual physical with their primary care physician (PCP). In 2016, we had 92% engagement in the program. If employees and spouses are smokers, they must indicate that they will commit to a cessation program in order to have a lower premium insurance rate.

CANCER SUPPORT GROUPS

We have two support groups available at PCPMC. A general cancer support group meets in Radiation Oncology every Wednesday from 5-7 p.m. The breast cancer support group meets in the Comprehensive Breast Center the second Wednesday of every month at 1 p.m. There are a few other support groups our facility refers patients to, as requested.

SMOKING CESSATION

PCPMC offers classes and support for those who want to kick the habit. A successive seven-week tobacco-cessation class, developed by the American Lung Association, is offered at PCPMC. Call 573-458-7695 for more information or to register.

NOTES:

[illegible]

Sat

1

2

3

4

5

6

7

8

Independence Day

9

10

11

12

13

14

15

16

17

18

19

20

21

22

23

24

25

26

27

28

29

30

31



**PHELPS COUNTY REGIONAL
MEDICAL CENTER**
Delbert Day Cancer Institute

July 2017

Pathology



Dwayne Crabtree, MD



Paul Cook, DO

- New automated tissue and slide staining for H and E, histochemical and immunohistochemical methods improving accuracy, efficiency and productivity in the anatomic pathology laboratory
- New reagent systems for breast, lung, colorectal, gastrointestinal, genitourinary, hematopathology and dermatopathology disease states improving access to personalized healthcare
- New iScan Coreo digital imaging system paired with Virtuoso image management software for image acquisition, analysis and customized reporting, increasing efficiency and productivity in the anatomic pathology laboratory
- Now offering access to the latest molecular testing of thyroid for indeterminate fine-needle aspiration biopsies to significantly decrease unnecessary thyroid cancer surgery
- New voice recognition software improving efficiency and productivity in the anatomic pathology laboratory
- New electronic interface with a major reference lab providing our esoteric cancer testing and allowing direct integration into the anatomic pathology cancer reports

Radiology



Edward Downey, DO



Anshu Duggal, MD

- Replaced previous CT scanner in the hospital with the Siemens Edge 128-slice CT Scanner with Stellar detectors – lower radiation dose
- Replaced previous CT scanner in the MOB with a Siemens AS-20 20-detector CT Scanner – lower radiation dose
- 3 new Siemens Mira Max X-ray portables – DR detectors allow lower-dose imaging
- 6 new Cios Alpha C-Arms for surgery and pain clinic – digital detectors allow lower radiation dose imaging
- Replaced previous nuclear medicine camera with Siemens Symbia camera

[illegible]

Sun	Mon	Tue	Wed	Thu	Fri	Sat
		1	2	3	4	5
6	7	8	9	10	11	12
13	14	15	16	17	18	19
20	21	22	23	24	25	26
27	28	29	30	31		



At least 60% of our registered nurses are certified in oncology nursing and are recognized for their specialty knowledge in oncology nursing. 100% of the registered nurses maintain the chemotherapy & biotherapy certificate from the Oncology Nursing Society®. In addition, 100% of the registered nurses are certified in Advanced Cardiovascular Life Support.



Stephen Toothaker, MD
Medical Oncology /
Hematology



Tezo Karedan, MD
Medical Oncology /
Hematology



Becky Witham, FNP
Medical Oncology /
Hematology

DDCI INFUSION CENTER

We provide the same type of cancer care as large institutions and follow national evidence-based guidelines. The infusion center is designed to have community, semi-private and private seating selections. The room has 16 infusion chairs with family seating arranged throughout. All of our infusion chairs have heat and massage options, offering increased comfort for our patients. There are also two private rooms for those who need to lie down during their treatment. A private phlebotomy room, with a phlebotomist on staff, offers patients convenient access to care. In addition, a pneumatic tube system is housed in the infusion center that sends specimens directly to the main PCRMC lab for timely results. There is an on-site, state-of-the-art, pharmacy within the infusion center dedicated to oncology, with a Doctor of Pharmacy on staff.



**Amy Weckman,
Pharm.D.**

Amy Weckman, Pharm.D., graduated from St. Louis College of Pharmacy with a Bachelor of Science in Pharmacy and earned her Doctor of Pharmacy in 1999. She is an adjunct clinical instructor with the St. Louis College of Pharmacy, focused on precepting pharmacy students in their last year of rotations. She enjoys the challenge of a constantly evolving field in oncology pharmacy and being a part of the team approach for patient care at PCRMC. Amy appreciates that we are able to offer our patients the same oncological treatments locally at PCRMC that are offered at larger institutions within the United States.

NOTES:

[illegible]

Sat

1

2

3

4

5

6

7

8

9

Labor Day

10

11

12

13

14

15

16

17

18

19

20

21

22

23

24

25

26

27

28

29

30



**PHELPS COUNTY REGIONAL
MEDICAL CENTER**
Delbert Day Cancer Institute

September 2017

PCRMC COMPREHENSIVE BREAST CENTER



PCRMC COMPREHENSIVE BREAST CENTER (573)458-3100

- A pumpkin decorating contest, raised over \$850 with all proceeds going to the Phelps Regional Health Care Foundation Mammography Fund.
- 50 free 3-D mammograms for uninsured women were offered through the Foundation Mammography Fund in honor of Breast Cancer Awareness Month.
- On August 15, 2016, a 3-D Mammography Open House was held with tours and information given.
- The 1st Annual Breast Center Awareness March was held, and 60 people participated and T-shirts were made and sold. The event raised \$4,300, with all proceeds going to the Mammography Fund.
- Twelve Days of Breast Cancer Awareness emails were sent out to 1,700 employees, with prizes given to those who answered the trivia questions correctly in October for Breast Cancer Awareness Month.
- Cardio for a Cure was held at The Centre in October.
- Tiffany Henry participated in the Ask the Professionals radio show for the breast center as well.

NOTES:

[illegible]

Sat

7

14

21

28

Halloween



October 2017

Radiation Oncology



Christopher Spencer, MD, MS



Jinna Lisenbe, AGPCNP-BC

Varian TrueBeam System

Varian Medical System's True-Beam system is an advanced image-guided radiation therapy system used to treat cancer with speed and accuracy while avoiding healthy tissues and organs.

TrueBeam Linear Accelerator

- Advanced speed and accuracy
- Streamlined imaging and patient positioning tools

o Vision Radiation Therapy

- Tracks patient motion during treatment
 - o Breathing too deep or shallow
 - o Unintentional movement by patient
- Automatically shuts off radiotherapy when movement exceeds tolerances
- Deep inspiration breath holds
 - o Decreases dose to the heart while treating breast cancer
- Gating
 - o Lung, pancreas, liver

o "6 Degrees of Freedom" in Robotic Couch Assembly

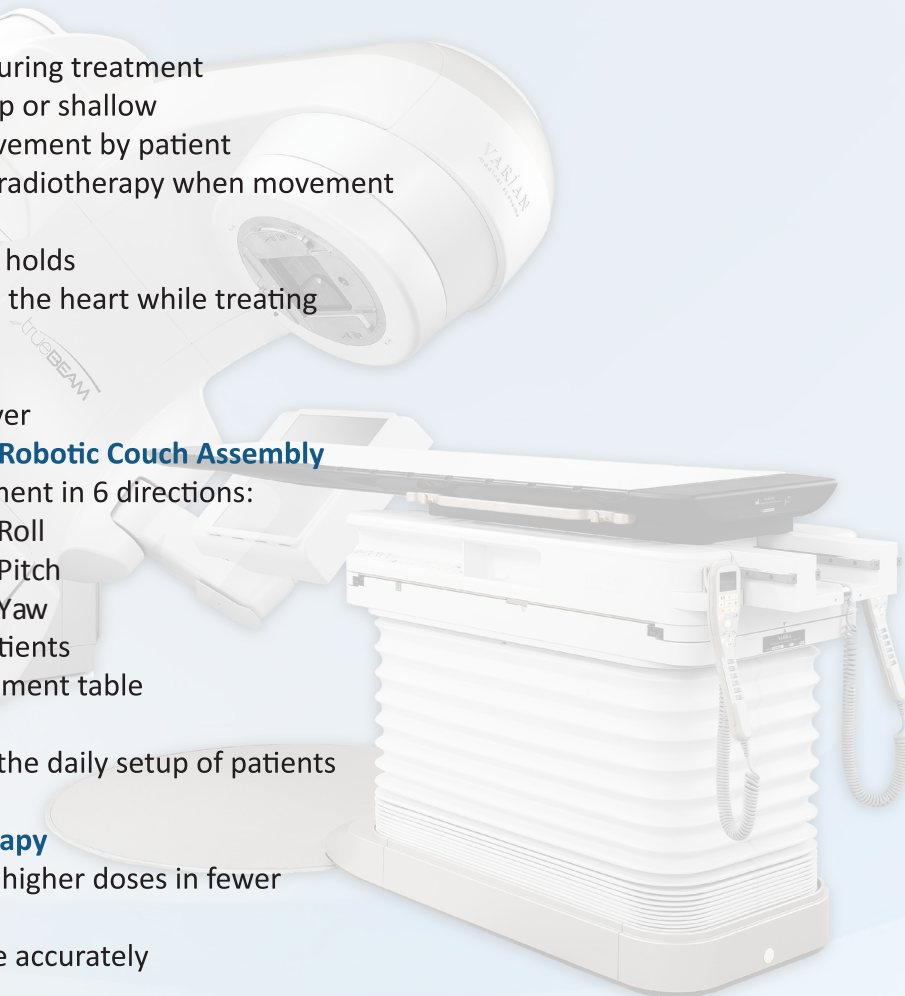
- Allows for couch movement in 6 directions:
 - o Vertical
 - o Roll
 - o Longitude
 - o Pitch
 - o Lateral
 - o Yaw
- Streamlines setup of patients
- Decreases time on treatment table
- Better patient comfort
- Decreases variations in the daily setup of patients

o Stereotactic Radiation Therapy

- Treat smaller tumors to higher doses in fewer treatments
- Treat brain tumors more accurately

Velocity

- Clinical data and image compiling system
- Consolidates imaging scans and treatment information



NOTES:

[illegible]

Sat

1

2

3

4

5

6

7

8

9

10

11

Election Day

Veteran's Day

12

13

14

15

16

17

18

19

20

21

22

23

24

25

Thanksgiving Day

26

27

28

29

30



**PHELPS COUNTY REGIONAL
MEDICAL CENTER**
Delbert Day Cancer Institute

November 2017



COMMUNITY OUTREACH

31st Annual Cancer Gala

The 31st Annual Cancer Gala was held on February 20, 2016, at the Havener Center at Missouri S&T. All proceeds were given to the Joy of Caring Cancer Fund and the Delbert Day Cancer Institute for research. Over 500 people attended the event, raising approximately \$160,000.

3rd Annual National Cancer Survivors Day

The 3rd Annual National Cancer Survivors Day was hosted by the Delbert Day Cancer Institute and held at Greentree Christian Church on June 4, 2016. The event celebrated cancer survivors with breakfast, baskets/giveaways and a program. Over 200 survivors and family members attended.

4th Annual Superhero 5K

4th Annual Superhero 5K was hosted by the Delbert Day Cancer Institute on June 11, 2016, and was held at the Veterans Memorial Park. All proceeds were given to the Joy of Caring Cancer Fund. 277 participants attended the event, raising approximately \$10,000.

Relay for Life

The Phelps County Relay for Life was held at Greentree Christian Church on August 27, 2016. The Delbert Day Cancer Institute was the premier sponsor for the 2016 Relay for Life.

JOY OF CARING CANCER FUND

Because of the Joy of Caring no one fights alone. The Phelps Regional Health Care Foundation's Joy of Caring Cancer Fund helps patients with financial needs that they are no longer able to manage due to the cost of treatments or inability to work. The Joy of Caring can provide patients with wigs, head coverings, lymphedema sleeves, prosthetics, medications, etc., to help manage the effects of cancer. The fund also provides nutritional supplements to help patients meet their nutritional needs during treatment. Joy of Caring can also help patients with gas cards to get to and from treatments as well as many other financial burdens. This is truly a fund where giving a little makes a world of difference to someone battling cancer, and the people who contribute to this fund are greatly appreciated.

					1	2
3	4	5	6	7	8	9
10	11	12	13	14	15	16
17	18	19	20	21	22	23
24	25	26	27	28	29	30
31						
Christmas Eve	Christmas Day					
New Year's Eve						

[illegible]

December 2017

RESEARCH IN PHELPS COUNTY

The Delbert Day Cancer Institute along with the Mercy Oncology/Hematology Clinic-Rolla is proud to be an affiliate of the Cancer Research for the Ozarks organization. As an affiliate member of the National Cancer Institute's Community Oncology Research Program (NCORP), we are able to access a wide variety of trials sponsored by the National Cancer Institute. Our patients can participate in cutting-edge research without ever leaving home. This benefits our patients in many ways:

- Access to promising new treatment options often not available outside of clinical trials
- Regular follow-up care with your physician and the research team
- Participants may be the first to benefit from the new treatments being studied
- Helping future cancer patients through research participation

Most of the cancer treatments we have today are the result of a clinical research trial. Participation in cancer research is voluntary. Our team of trained research nurses will work closely with you and your physician to see if a research trial might be right for you. Please contact Linda Schumacher or Janette Richards at the Delbert Day Cancer Institute for further information at 573-458-3324.



**Linda Schumacher,
RN, BSN, CCRC**



**Janette
Richards, RN**



Meet the Genetic Counselor:

Mary Kirby is a Missouri native who grew up in Springfield, MO. She graduated from Drury University with a Bachelor of Arts in biology, religion and philosophy. From there, Mary went on to graduate from the University of Colorado Anschutz Medical Campus in Denver, CO, with a Master of Science in biophysics and genetics through the genetic counseling program. Mary is a board certified genetic counselor by the American Board of Genetic Counselors. Following graduate school, Mary returned to Springfield to establish the first cancer genetic counseling program of southern Missouri through CoxHealth. Mary is now bringing genetic counseling to PCRMC.

At PCRMC, we offer genetic counseling to our patients. The service is provided by the Delbert Day Cancer Institute.

If you would like more information about genetic counseling, please contact Mary Kirby, MS, CGC, at 417-269-2110. Mary Kirby is at PCRMC to meet with patients the second Thursday of every month. To schedule an appointment, please call our toll free number 1-855-406-3324 (DDCI).

Comprehensive Cancer Services Team



**Carol Walter, MSN, RN
Nurse Navigator**



**Lorie Bourne, MS, RD, LD, CNSC
Dietitian**



**Susan Buhr, MSW, BSW
Social Worker**

The comprehensive cancer services team at the Delbert Day Cancer Institute (DDCI) provides support services including a nurse navigator, registered dietitian and social worker who work in tandem with the world-class oncologists, surgeons, radiologists, physicians and pathologists. A cancer diagnosis is life-changing, and the cancer services team at PCPMC provides critical support and resources throughout a patient's cancer journey - from screening, to diagnosis, to treatment and into survivorship.

Nurse navigation services are available to assist patients from diagnosis into survivorship. Nurse navigators can help patients with counseling, support and education. Sometimes this means just being present; other times it means literally holding their hand. Mainly, the navigator is there for the patient during the hard times. The navigator is available during biopsies and appointments to help lend a second ear and take notes and keep referrals and appointments organized. Our nurse navigator, Carol Walter, MSN, RN, wants patients to know she is available if they need her. "My job is not just a 9 to 5 position; I am available to help patients when the need arises, whether day or night," Walter said.

Nutrition information and resources are provided to all patients at moderate and high nutritional risk as well as to any patient who has questions or needs help. Our licensed registered dietitian can offer support to patients who are having side effects from cancer or the cancer treatments so patients are better able to manage their nutritional health. Common side effects include dry mouth, mouth sores, taste changes, vomiting, nausea, diarrhea, constipation, weight loss, etc. Our registered dietitian, Lorie Bourne, MS, RD, LD, CNSC, also provides survivorship guidelines for healthy living at our breast cancer support group meetings and to any cancer patients wishing to live a healthier lifestyle to reduce their risk of recurrence. Our dietitian is available as a resource on any nutritional concerns patients have.

"I help patients manage the side effects of treatment with a focus on protein and fluid intake. Making sure patients are getting enough nutrients so they are able continue to do as much of their normal activities as possible can have an impact on their quality of life," Bourne said.

Our social worker is available to help patients and families access community resources in order to meet any financial, transportation, home health, hospice, in-home services, housing, utilities, medications and medical supply needs that arise prior, during and after treatment. Our social worker also helps patients establish health insurance if they are uninsured as well as other resources to help patients find solutions to any pressing financial concerns. Our social worker, Susan Buhr, MSW, BSW can assist patients and their families with counseling and emotional support to help them sort through their feelings, reduce stressors, cope and understand their grief.

"I am our patient's advocate and will refer them to local support groups, provide educational materials and help them locate financial resources," Buhr said.

PCRCMC CANCER CARE SERVICES • DELBERT DAY CANCER INSTITUTE

573-458-3324 (DDCI)

Toll Free Number 1-855-406-3324 (DDCI)

Hematology/Oncology/Infusion

573-458-3324 (DDCI)

Radiation Oncology

573-458-3324 (DDCI)

Comprehensive Breast Center

573-458-3100

Cancer Rehabilitation

573-458-7146

Endoscopy

573-458-7860

General Surgery

573-364-9000

Neurology

573-364-9000

Gynecology

573-364-9000

Ear, Nose and Throat

573-364-5719

Orthopedics

573-364-9000

Pulmonology

573-364-9000

Urology

573-364-9000

Supportive Care

573-364-9000 (Dr. Gamble)

The Center Clinic

573-364-2007

Phelps Regional Homecare

573-364-2425

Social Services

573-458-8339

Nurse Navigation

573-458-7164

Nutritional Counseling

573-458-8337

Cancer Research

573-458-8776

Cancer Support Group

Radiation Oncology (573-458-7500)

Every Wednesday (5-7 pm)

Breast Cancer Support Group

Breast Center (573-458-3108)

2nd Wednesday every month (1 pm)

Education/Outreach

573-458-3341

Chaplaincy Program

573-458-7935

573-458-7729 (Prayer Line)

Cancer Committee 2016

Chairman

Dr. Christopher Spencer, Radiation Oncology

Cancer Liaison

Dr. Stephen Toothaker, Medical Oncology

Coordinators

Susan Buhr, Psychosocial Services

Andrea Litz, Cancer Conference

Tracy Limmer, Community Outreach

Michelle Simpson, Quality Improvement

Linda Schumacher, Clinical Research

Sarah Wiggins, Cancer Registry Quality

Members

Dr. Yaqoob Ali, Medical Oncology

Hillary Black, Infusion

Dr. Joseph Bond, Medical Oncology

Lorie Bourne, Dietitian

Karen Clover, Inpatient Medical Oncology

Dr. Paul Cook, Pathology

Dr. Phil Cox, Pastoral Care

Dr. Dwayne Crabtree, Pathology

Dr. James Davison, Gynecology

Susan Dolan, Clinical Research

Dr. Edward Downey, Radiology

Dr. Randee Jo Feco, Psychology

Dr. Alexander Gamble, Palliative/Psychiatry

Tiffany Henry, Breast Center

Pam Karr, CQM

Dr. Brian Kriete, ENT

Nikki Leake, American Cancer Society

Jinna Lisenbe, AGPCNP-BC, Radiation Oncology

Dr. Geoffrey Lloyd-Smith, Urology

Sarah Menary, Rehab

Mary Kirby, Genetic Counselor

Diana Pantaleo, Radiation Oncology

Janette Richards, Research Nurse

Cindy Searce, Hospice

Dr. Vijay Sekhon, Radiology

Jason Shenefield, Cancer Program Admin

Rhonda Teague, Infusion

Dr. Dana Voight, Surgery

Carol Walter, Nurse Navigator

Amy Weckman, Pharmacist

Becky Witham, FNP, Medical Oncology